



Protecting Berry Lake's Water Quality

Emily Henrigillis
The Plant Gal LLC

Berry Lake Property Owners Association Annual Meeting
May 28, 2022
Northern Grace Youth Camp

Outline

Introduction

Berry Lake's shoreline

Buffers & Rain Gardens

Why native plants?

Examples

Next steps

Resources



Introduction

The Plant Gal was established in 2021

Goals are to bridge the gap for people wanting to establish native plant habitat on their properties - urban, suburban, or lakeside - who may not know how to get started

Can assist with suggestions, design, and install

Worked on Berry Lakes years ago with Onterra



Berry Lake is interesting

Water levels in Berry Lake fluctuate greatly - the lake literally changes acreage due to water level changes

Populations of hybrid watermilfoi, pale yellow iris, and phragmites

Basins make interesting water quality

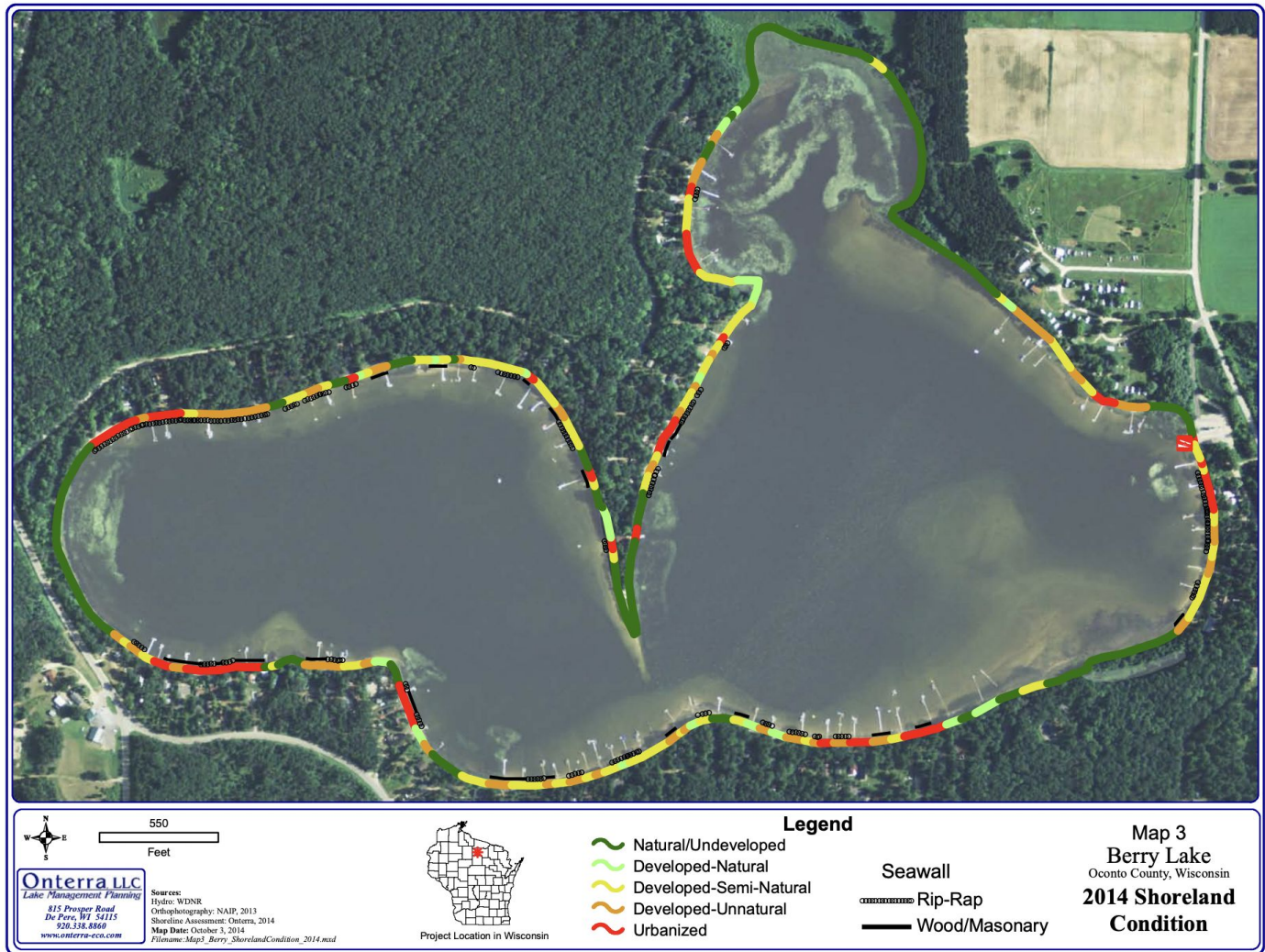
You all are making the effort to protect the lake - so what can you do on an individual scale to further the protection?



Implementing
your lake
management
plan

Management
Goal #4 -
Shoreland

Management
Goal #2 -
Water Quality



Shoreline buffer

Waters edge to 35 feet back is the riparian zone

Crucial for many of our organisms

Helps slow and stop erosion

Keeps geese out

Attracts dragonflies - help eat those pesky mosquitoes



Rain gardens

Position 10 feet away from the foundation of your home

Place above areas that flood
- NOT in areas that flood

Water infiltrates in 1-2 days -
takes mosquitos at least 7 to hatch

Keeps hot, polluted water from entering the lake/storm drain



Why

Survive

Deep R

Provide

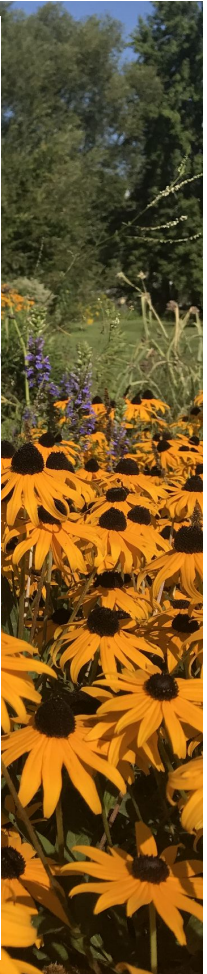
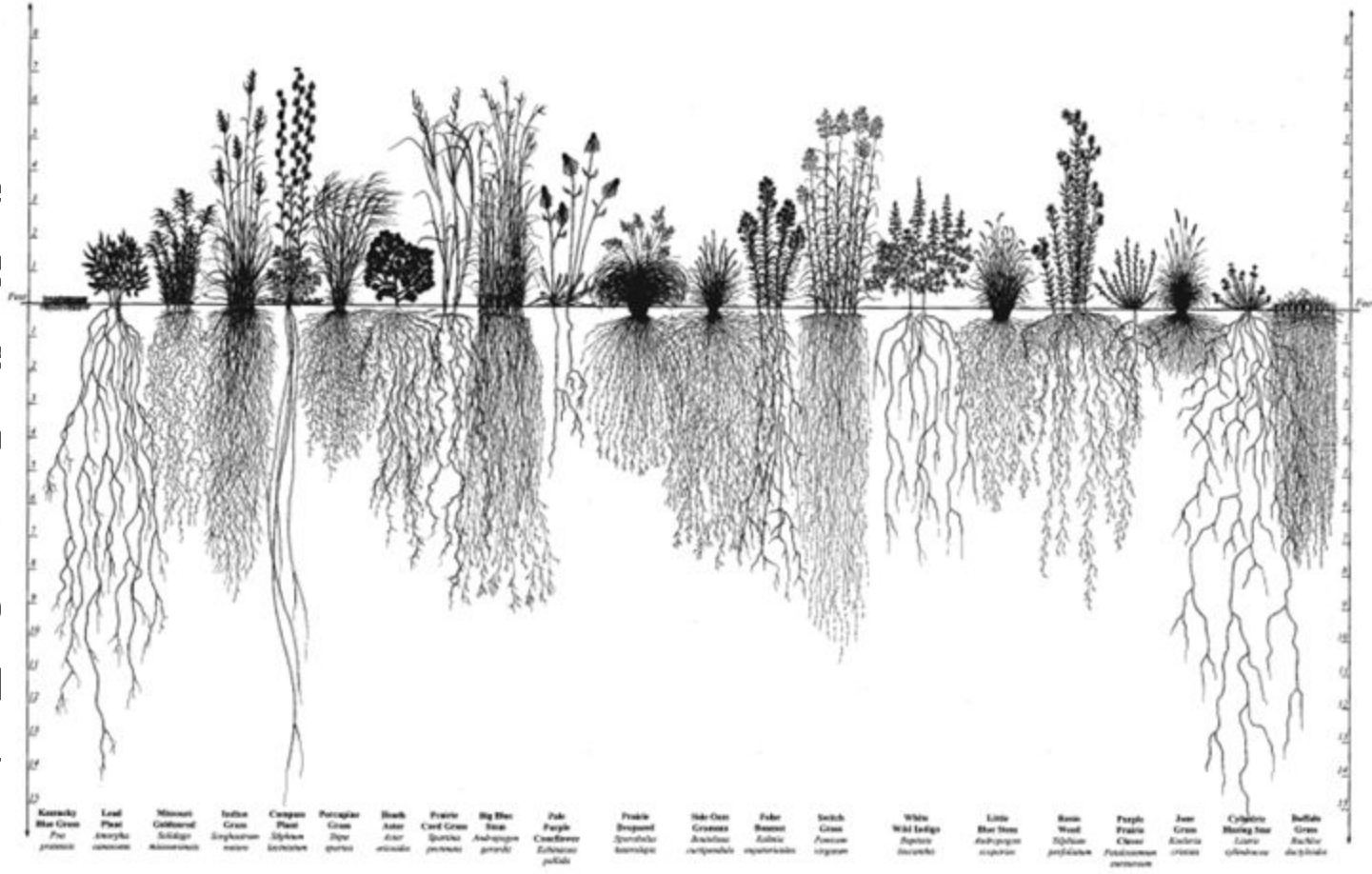
For

Ne

Preserv

Aesthet

Lower r



Expectations

Sleep

Photo courtesy of Menominee
CFZ Department



Expectations

Creep

Photo courtesy of Menominee
CFZ Department



Expectations

Leap

Photo courtesy of Menominee
CFZ Department



Nearby Examples

- Whispering Pines on Shawano Lake
- Glas Coffee House
- Gibson Island on Grass Lake - Cloverleaf Chain
- Franklin Park in Shawano
- The Lodge on Legend Lake



Why?

For our children, grandchildren and great grandchildren

Protecting a resource we all love - hunt, fish, swim, boat...

Supporting life - aquatic, semi aquatic, and terrestrial

Preventing erosion

Preventing pollution

Bringing beauty into the world



How do I take the next step?

- Work with resources - next slide
- Talk to your lake association
- Apply for a Healthy Lakes Grant
- Work with a consultant to plan and implement your native plant project



Resources

- Berry Lake Property Owners Association
- Wild Ones Wolf River Chapter
- Stone Silo Prairie Nursery - De Pere, WI
- Wisconsin DNR
 - Healthy Lakes
- UW-Extension Lakes
- Prairie Moon Nursery
- Prairie Nursery
- Oconto County Land Conservation Department
 - Shoreline Restoration cost share funding - up to \$2500
- The Plant Gal
- WAMSCO



Thank you!

Questions

Emily Henrigillis
wiplantgal@gmail.com

920-412-9418

wiplantgal.com

@wiplantgal on Instagram

